



pearson
ferrier®



19 BOOTH WAY
Bury, BL8 3JL
Offers Over £200,000

19 BOOTH WAY

Property at a glance

- EXTENDED 1970's TERRACE
- TOTTINGTON VILLAGE
- FREEHOLD
- THREE BEDROOMS
- GARDEN FRONT & REAR
- CLOSE TO EXCELLENT LOCAL SCHOOLS
- CLOSE TO LOCAL COUNTRYSIDE

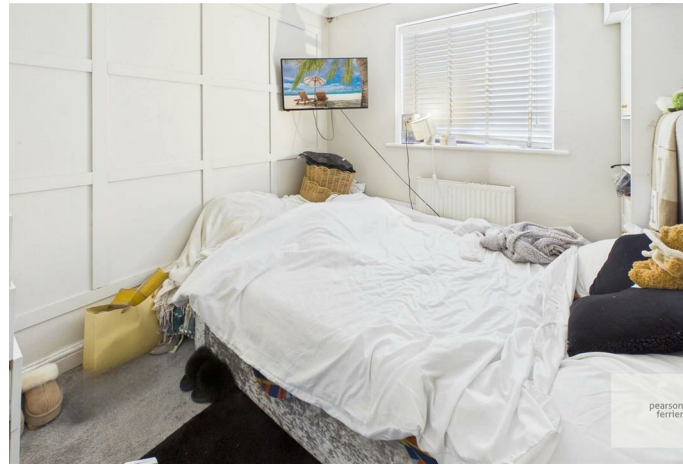
FREEHOLD three bedroom extended terrace property located on the ever popular Booth Farm estate in Tottington Village. The location offer excellent access and transport links to Bury town centre with Tottington Primary & Christ Church Primary (both Ofsted Good) and local countryside being on your doorstep yet with the heart of the village being only a short walk. The property is in need of some slight cosmetic improvement but offers you the chance to add your own style to your new home! In brief the property comprises of; Porch, extended lounge & kitchen/Diner. To the first floor are three bedrooms and family bathroom. the property also benefits from gardens to both the front & rear.

Tenure - Freehold

EPC - tbc

Council Tax Band - B







Floor 0



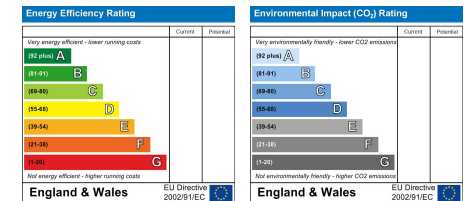
Floor 1

Approximate total area⁽¹⁾
70.6 m²

(1) Excluding balconies and terraces

Calculations reference the RICS IPMS 3C standard. Measurements are approximate and not to scale. This floor plan is intended for illustration only.

GIRAFFE360



Bury Office
435/7 Walmersley Road, Bury, Lancashire, BL9 5EU
Telephone: 0161 764 4440
Fax: #
Email: bury@pearsonferrier.co.uk

www.pearsonferrier.co.uk



All statements contained in these particulars are for indicative purposes only and are made without responsibility on the part of Pearson Ferrier and the vendors of this property and are not to be relied on as statements or representations of fact. Potential purchasers should satisfy themselves by inspection or otherwise as to the accuracy of such details contained in these particulars.